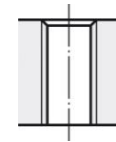
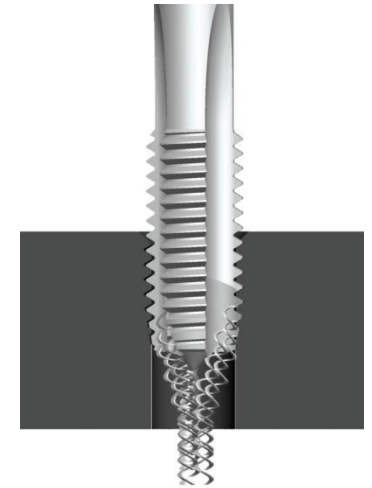
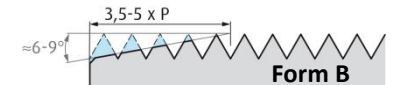


**NORIS STABIL VA HSSE**  
**Katalog-Nr. 5535 / 6535 / 7535**



4xD



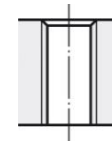
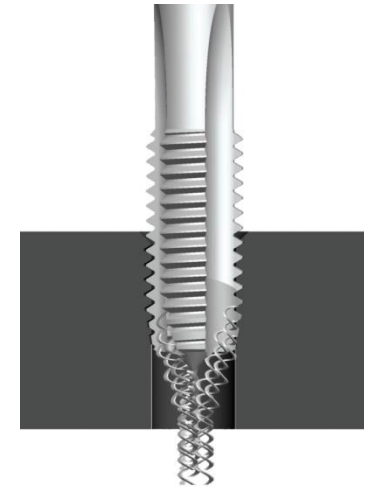
<b>A</b>	600-850N/mm <sup>2</sup>	8-10 m/min	Emulsion
<b>R</b>	≤1100N/mm <sup>2</sup>	4-8 m/min	Emulsion / Öl

**NORIS STABIL VA HSSE**  
**Katalog-Nr. 6535 / 7535**

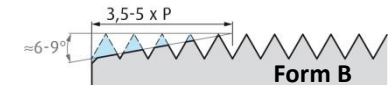


TiN-GS Beschichtung

Schaft h9



4xD



<b>A</b>	600-1100N/mm <sup>2</sup>	8-12 m/min	Emulsion
<b>R</b>	≤1100N/mm <sup>2</sup>	6-10 m/min	Emulsion / Öl