

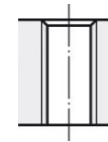
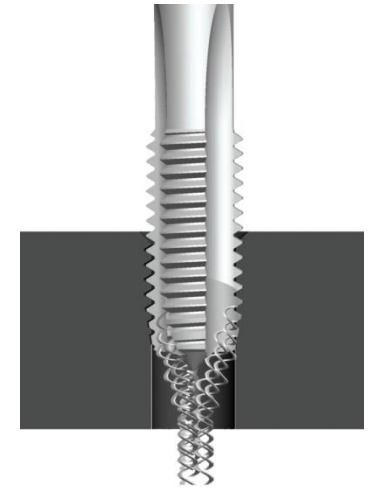
NORIS STABIL UNI CNC HSSE

Katalog-Nr. 6410 / 7410

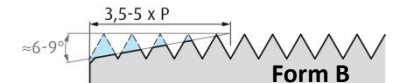


TiN-GS Beschichtung

Schaft h9



4xD



CNC

Optimiert für die CNC-Synchronbearbeitung mit Minimallängen-Ausgleichsfutter

A	≤1100N/mm ²	10-25 m/min	Emulsion
R	≤1100N/mm ²	6-10 m/min	Emulsion / Öl
F	GJL, GJS, GJV, GTW, GTS	15-50 m/min	Emulsion
N	G-AlMg, GD-AlSi, CuZn	12-20 m/min	Emulsion