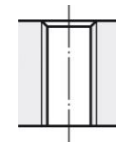
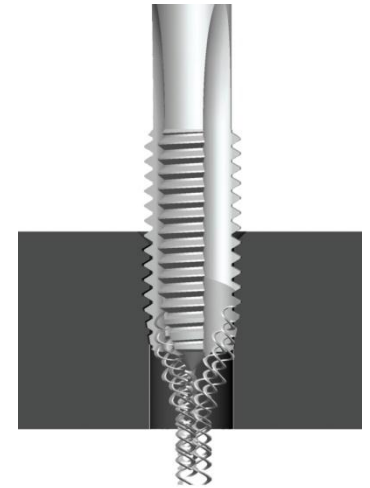


**NORIS STABIL Ti HSSPS**  
**Katalog-Nr. 6084 / 7084**

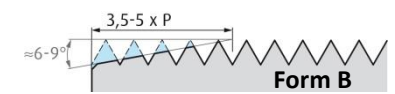


vaporisiert

Schaft h9



4xD



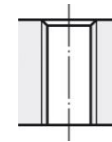
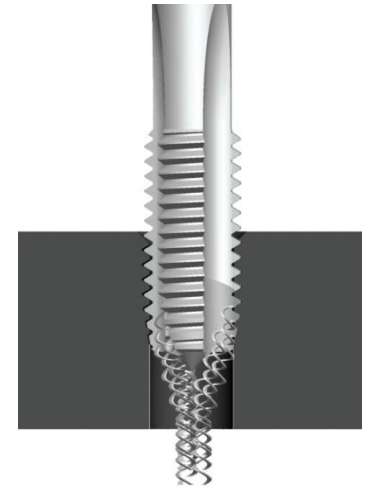
<b>A</b>	1100-1400N/mm <sup>2</sup>	4-6 m/min	Emulsion / Öl
<b>R</b>	≤1100N/mm <sup>2</sup>	4-8 m/min	Emulsion / Öl
<b>S</b>	Titanium, Ti-Leg., Ni-, Co-, Fe- Leg. ≤850N/mm <sup>2</sup>	2-6 m/min	Öl

**NORIS STABIL Ti HSSPS**  
**Katalog-Nr. 6084 / 7084**

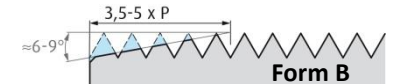


TIN Beschichtung

Schaft h9



4xD



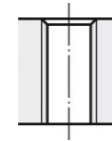
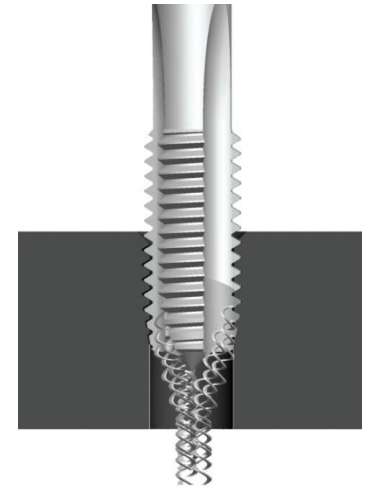
<b>A</b>	1100-1400N/mm <sup>2</sup>	6-8 m/min	Emulsion / Öl
<b>R</b>	≤1400N/mm <sup>2</sup>	4-10 m/min	Emulsion / Öl
<b>N</b>	kurzsp. CuAl	10-12 m/min	Emulsion
<b>S</b>	Titanium, Ti-Leg., Ni-, Co-, Fe- Leg. ≤850N/mm <sup>2</sup>	2-6 m/min	Emulsion / Öl

**NORIS STABIL Ti HSSPS**  
**Katalog-Nr. 6084 / 7084**

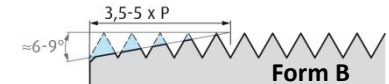


TINCH Beschichtung

Schaft h9



4xD



<b>N</b>	kurzsp. CuAl	10-12 m/min	Emulsion
<b>S</b>	Titanium, Ti-Leg.	2-6 m/min	Emulsion / Öl